

→ references 2019

# A2A TERMAL POWER PLANT



# A2A THERMAL POWER PLANT

**Location**

Monfalcone, Italy

**Client**

Endesa Italia S.p.A.

**Contractor**

Duro Felguera S.A.

**Scope of work**

Design, fabrication and installation of steel structures

**Period of execution**

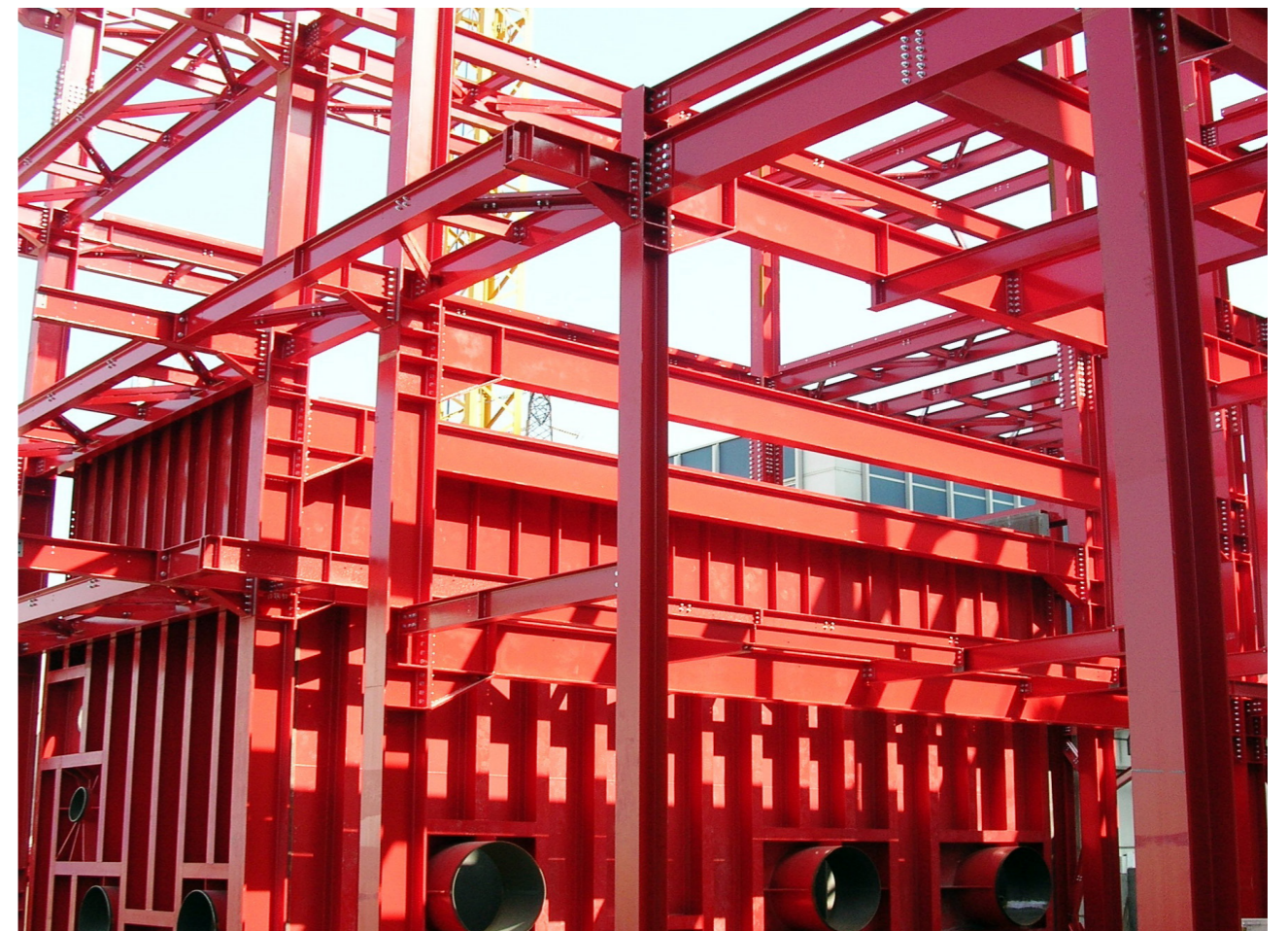
2006-2007

**Weight**

2.300 tons

The A2A Thermal Power Plant located in Monfalcone produces electricity and currently has an installed capacity of 976 MW and fueled by coal and dense fossil fuel oil, with a very low Sulphur content, with biomasses in co-combustion.

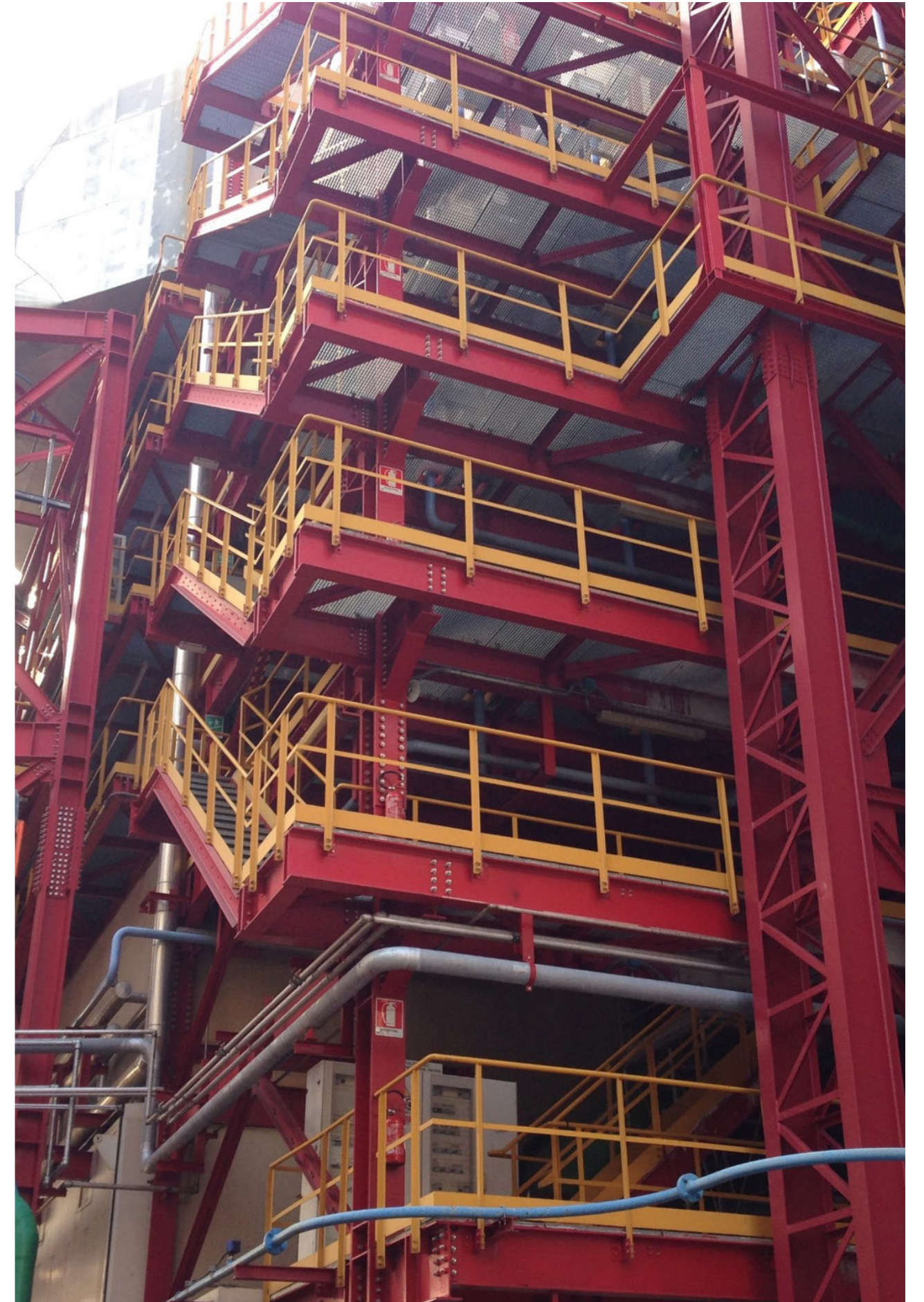
Placed along the East side of the Valentinis Canal, it covers an overall area of 30 hectares. The weight of the steel structures of the building reaches 2.300 tons.

















Ideas  
**shape**  
the  
World

Maeg Costruzioni S.p.A.  
Via Toniolo 40  
31028, Vazzola (TV) - Italy  
+39 0438 441558  
[www.maegspa.com](http://www.maegspa.com)